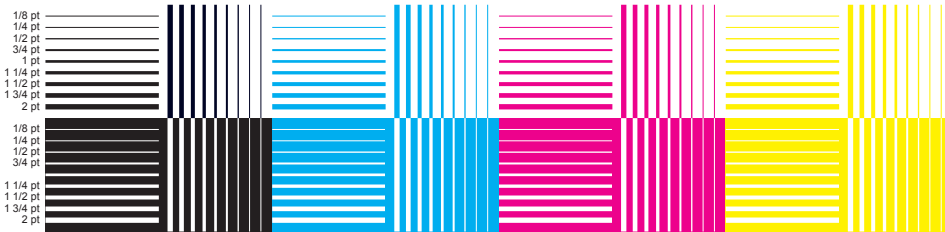


100% and 50% black bars for print variation across print area

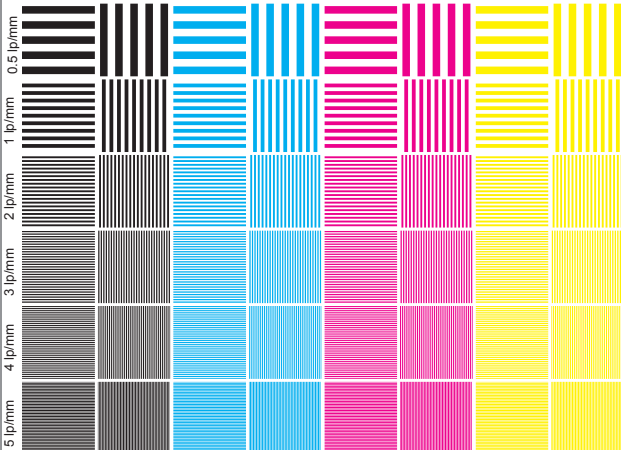
Line Quality, Width, Density, Raggedness, Blurriness



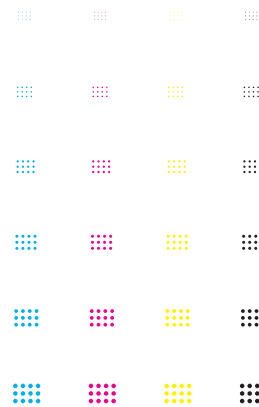
Color registration nominal 1 mm line spacing



Resolution, "MTF"



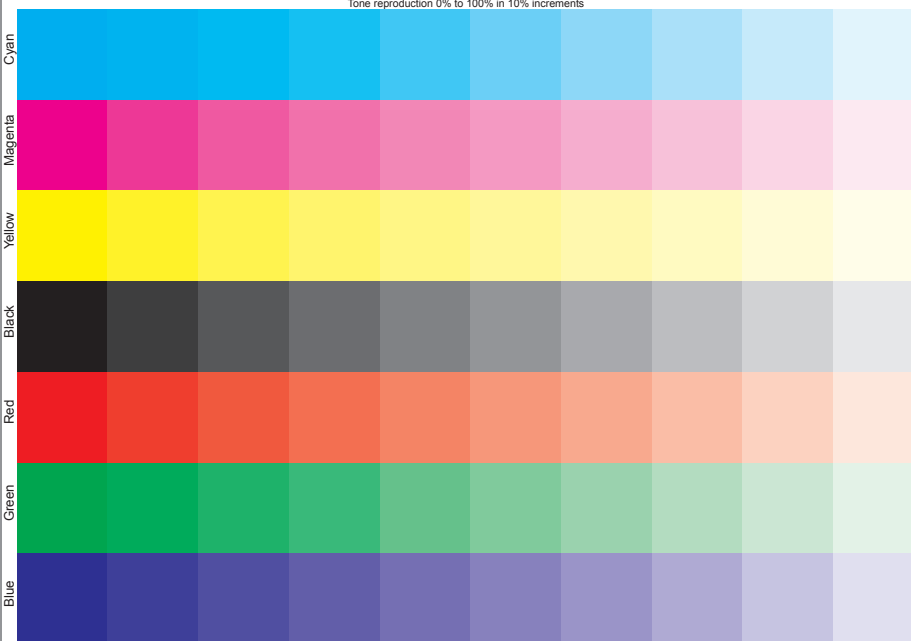
Dot Quality: 0.1, 0.2, 0.3, 0.4, 0.5, 0.6 mm dots



Inter-Color Bleed nominal 1mm line width



Tone reproduction 0% to 100% in 10% increments



Continuous tone reproduction to determine number of grays levels

Text Quality: 6.8, 10, 12 pt

LEN LEN LEN LEN
LEN LEN LEN LEN

3pt: abcdefghijklmnopqrstuvwxyz
4pt: abcdefghijklmnopqrstuvwxyzABCDEF GHIJKL
6pt: abcdefghijklmnopqrstuvwxyzABCDEF GHIJK



Quality Engineering Associates, Inc.
99 South Bedford Street, #4
Burlington, MA 01803, USA
(781) 221-0080 Fax (781) 221-7107

8pt: abcdefghijklmnopqrstuvwxyzABCDEF GHIJKLM
10pt: abcdefghijklmnopqrstuvwxyzABCDE
12pt: abcdefghijklmnopqrstuvwxyzA

Operator _____ Date _____
Printer _____
Paper _____
Settings _____

Pattern Name: Medium
Rev 4e

© 1999 QEA, Inc.